

An Analysis of the Factors That Determine the Self- assessment Skills of Undergraduate Economics Students

Jon Guest and Robert Riegler



Importance of Self- Assessment



- A key intended learning outcome of courses in HE is to develop the ability of the students to become effective independent/self-directed/self-regulated learners
- Must become able to accurately judge the quality of their own learning. i.e. have good self-assessment skills.
- Ultimate aim is to develop students who have evaluative skills that are similar to those of the tutor.

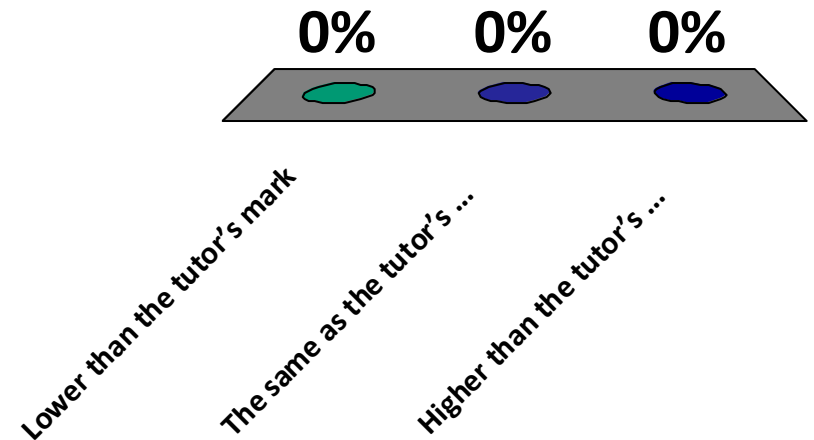
Different Types of Self-Assessment



- **Could try and measure the student's ability to self assess:**
 1. **A specific piece of coursework e.g. an essay**
 - Numerous studies across a range of different disciplines – Cassidy, 2007; Lew et al, 2010
 - However could not find any with economics students
 2. **Their understanding of the subject both before and after an in-class test/examination.**
 - Literature in economics – Grimes, 2002; Nowell and Alston, 2007; Chevalier et al, 2007

Do you think that on average the student self-assessment mark for an essay for Principles of Economics will be

- A. Lower than the tutor's mark**
- B. The same as the tutor's mark**
- C. Higher than the tutor's mark**



Previous Research Findings



- Large variations in the self-assessment performance of students across different studies.
- Is there a tendency for students to either over or underestimate performance?
- “Only by comparing the results of many studies can we see that there is no consistent tendency to over- or underestimate performance” (Boud, 1995)
- May be caused by variations in research design

Research Design Issues



- **How exactly are the students' estimated marks collected?**
 - **Concerns that estimate will influence the tutor**
- **Incentive to exert effort in a difficult task**
 - **3 percentage point bonus**
 - **Evidence of some confusion**
- **What study skills training did the students receive prior to carrying out the self-assessment exercise**
- **What are the students' estimated marks compared with?**

Study Skills Training



- **Exemplar exercise using ‘cleaned copies’ of previous essays**
- **‘Creating an assessment criteria’ activity**
 - **Comparison with the actual assessment criteria**
- **Generating feedback using the assessment criteria and comparison with tutor comments**
- **A group peer review exercise marking a draft copy of an economics essay**

Summary Statistics for Self-Assessment Scores and Tutor Marks for Microeconomics/Macroeconomics Modules

Course	Variable	Obs	Mean	Std. Dev.	t	P-value
1 st year	self assess.	102	59.72	7.77		
Micro	tutor mark	102	50.14	8.06	9.965	0.00
1 st year	self assess.	83	58.69	6.07		
Macro	tutor mark	83	55.93	10.12	2.433	0.017
2 nd	self assess.	118	59.84	8.19		
Micro	tutor mark	118	50.70	10.58	11.7	0.00
All	self assess.	303	59.48	7.51		
	tutor mark	303	51.94	9.95	13.13	0.00

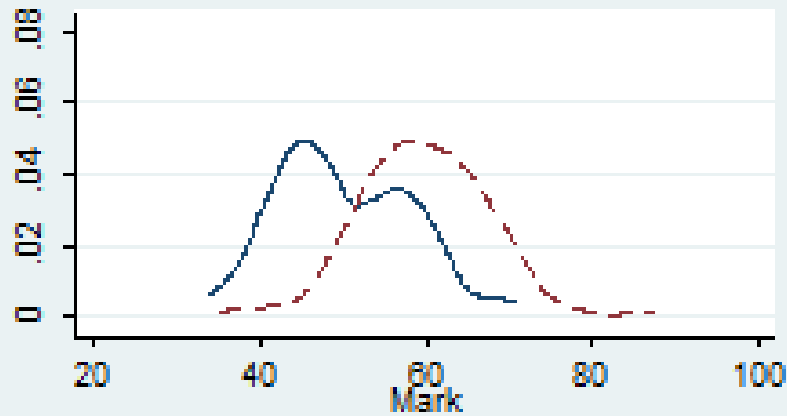
Previous Research Findings



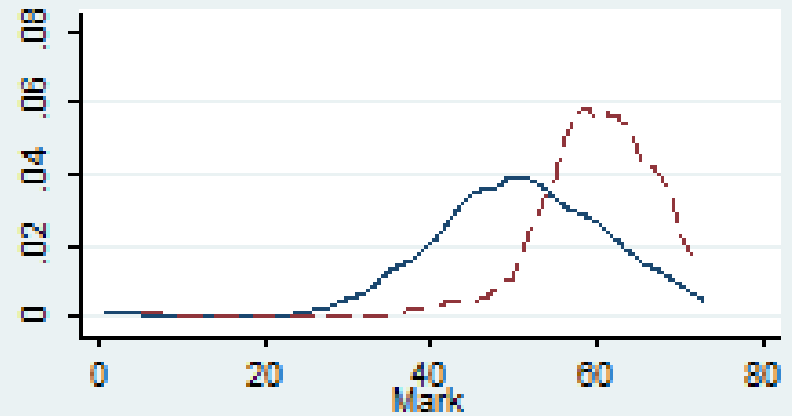
- Mean estimates do not illustrate the large variations in student self-assessment accuracy within a given group of students.
- What factors account for the variation in the ability of students to assess their own performance?
 - Gender
 - Subject/discipline
 - Expertise in the subject
 - Experience of self-assessment
 - Ability

Self-assessment vs. tutor mark

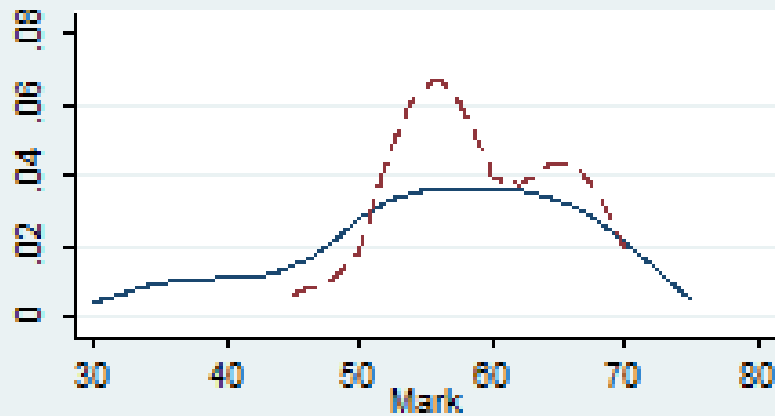
Micro 1



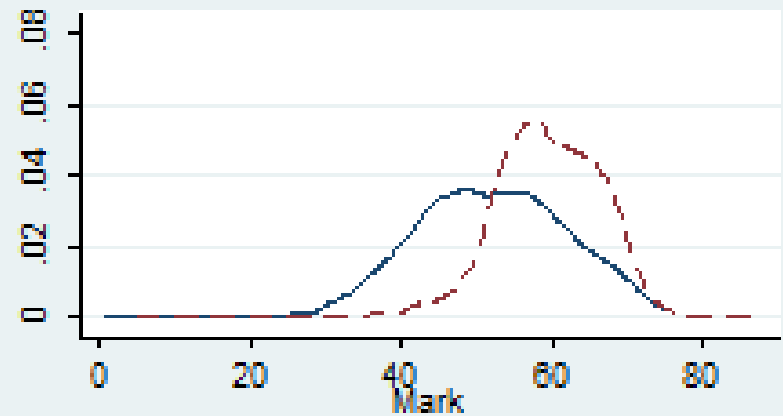
Micro 2



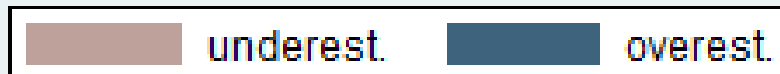
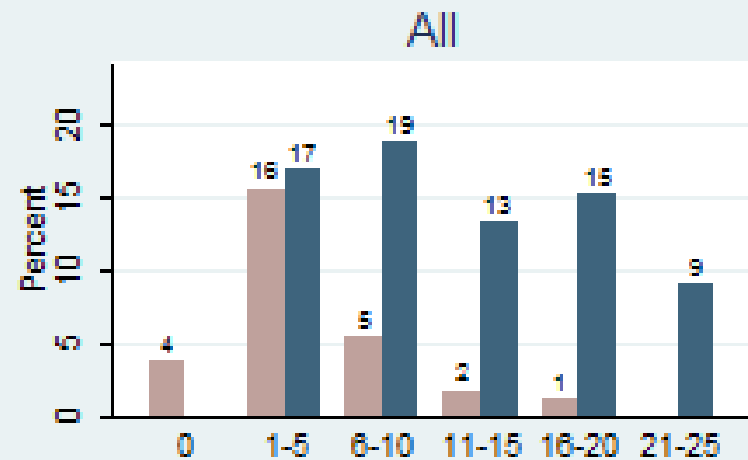
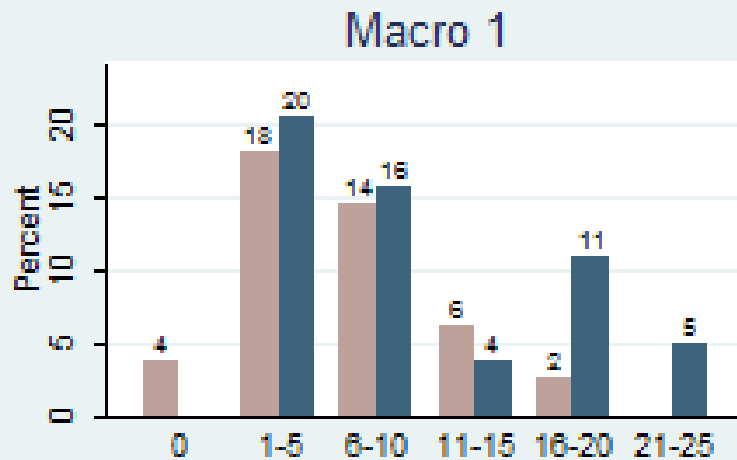
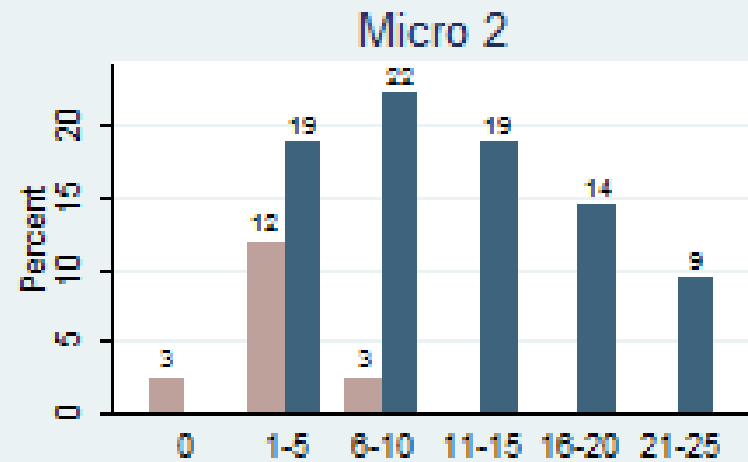
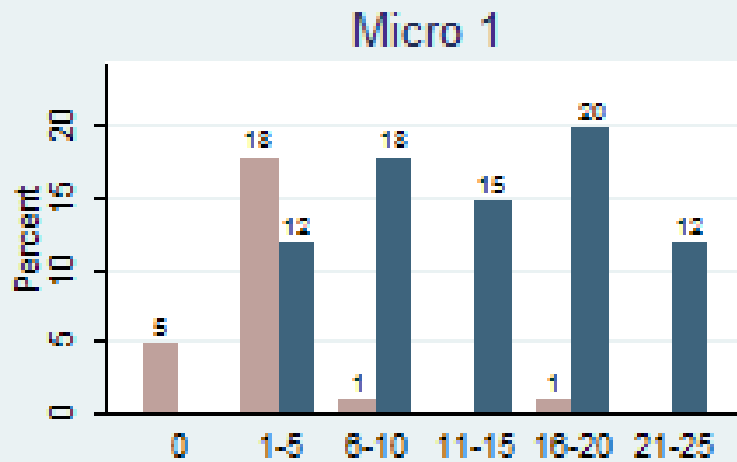
Macro 1



All



Self –Assessment Accuracy



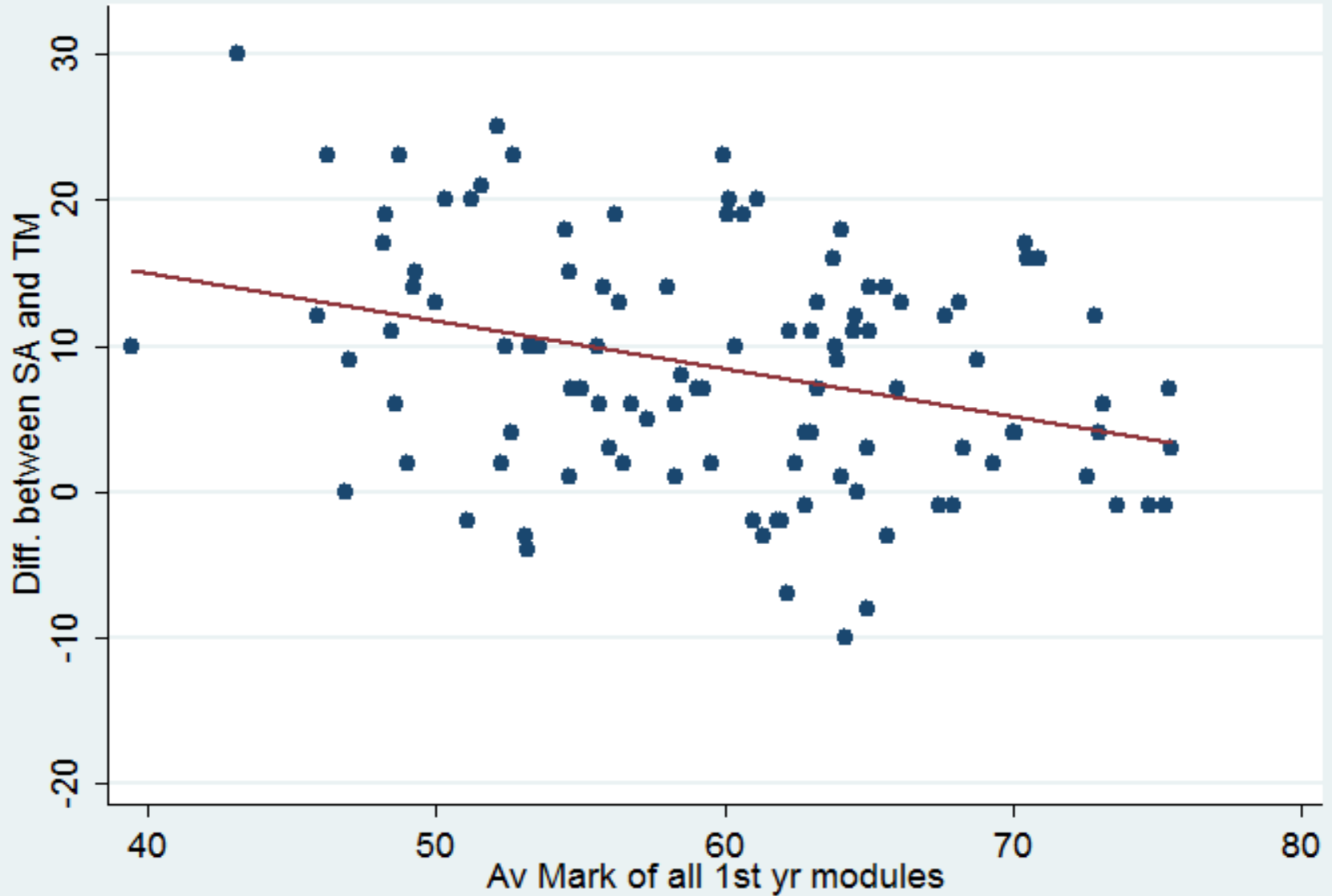
Ability Effect



- **Previous studies have found a strong “ability effect”**
- **“students judged as more academically competent were able to self assess with higher accuracy than their less competent peers” Lew at al, 2010**
- **How do you measure ability/ academic competence?**

Correlation Between Accuracy and Ability

(2nd year students)



Estimated Model



- $Dispersion_i = \beta_0 + \beta_1 Ability_i + \beta_2 Econ_i + \beta_3 Gender_i + \beta_4 Course_i + \varepsilon_i$
- Dispersion: Absolute value of SA – TM
- Sample: 1st and 2nd year students UK
- Measuring ability:
 - Tutor mark for the essay
 - 1st year Micro mark, av. mark of all 1st year modules
 - Tariff points (total and A2), Maths A-level results

Self –Assessment Accuracy (2nd year)

Dependent Var	Absolute difference between self-assessment and tutor mark						
Essay Tutor Mark	-0.567*** (0.06)						
1 st year Micro Mark	-0.0185 (0.02)						
1 st year Mi, Ma, CI	-0.297** (0.10)						
All 1 st year modules	-0.244** (0.09)						
Tariff points (total)	-0.0203 (0.02)						
Tariff points (A2)	-0.0433* (0.02)						
Maths A, B	-0.0696 (2.26)						
Maths C, D, E	1.155 (1.78)						
Econ A level	1.835 (1.31)	2.837 (1.93)	3.816* (1.82)	3.595+ (1.83)	2.793 (1.92)	2.072 (1.89)	3.183 (1.94)
Gender	0.695 (1.32)	3.477+ (1.88)	3.237+ (1.79)	3.177+ (1.81)	2.864 (1.91)	2.319 (1.86)	3.192 (1.96)
Intercept	37.14*** (4.00)	5.227+ (2.78)	20.50** (6.20)	18.65** (6.07)	11.05+ (5.99)	17.96** (6.12)	3.57 (2.53)
Course dummy	Yes	Yes	Yes	Yes	Yes	Yes	Yes
Observations	81	81	81	81	81	81	81
R square	0.588	0.124	0.202	0.188	0.131	0.181	0.116

Standard errors in parentheses

+ p<0.10, * p<0.05, ** p<0.01, *** p<0.001

Self –Assessment Accuracy (1st year Micro)

Dependent Var	Absolute difference between self-assessment and tutor mark			
Essay Tutor Mark	-0.557*** (0.09)			
Tariff points (total)		-0.0156 (0.02)		
Tariff points (A2)			0.00463 (0.02)	
Maths A, B				-5.299 (3.43)
Maths C, D, E				-0.597 (2.08)
Econ Alevel (Dummy)	-0.777 (1.73)	-1.636 (2.13)	-1.857 (2.17)	-3.386 (2.36)
Gender	2.363 (1.90)	2.243 (2.37)	1.95 (2.36)	2.891 (2.42)
Intercept	36.60*** (4.92)	13.40** (4.94)	8.397 (5.08)	10.72*** (2.76)
Course dummy	Yes	Yes	Yes	Yes
Observations	75	75	75	75
R square	0.377	0.053	0.042	0.075

Standard errors in parentheses

+ p<0.10, * p<0.05, ** p<0.01, *** p<0.001

Self –Assessment Accuracy (1st and 2nd year Micro)

Dependent Var	Absolute difference between self-assessment and tutor mark				
Essay Tutor Mark	-0.555*** (0.05)				
Tariff points (total)		-0.0186+ (0.01)			
Tariff points (A2)			-0.0207+ (0.01)		
Maths A, B					-0.805 (1.83)
Maths C, D, E					0.621 (1.35)
2 nd year dummy	0.313 (0.93)	-0.543 (1.27)	-0.336 (1.31)		-1.168 (1.23)
Econ Alevel (Dummy)	0.635 (1.05)	0.53 (1.38)	0.518 (1.38)		0.42 (1.41)
Gender	1.216 (1.08)	2.263 (1.41)	2.041 (1.42)		2.316 (1.44)
Intercept	36.61*** (3.05)	13.09*** (3.55)	13.19*** (3.59)		7.823*** (1.88)
Course dummy	Yes	Yes	Yes		Yes
Observations	156	156	156		156
R square	0.459	0.07	0.07		0.056

Standard errors in parentheses

+ p<0.10, * p<0.05, ** p<0.01, *** p<0.001

Self –Assessment Accuracy (1st year Macro)

Dependent Var	Absolute difference between self-assessment and tutor mark				
Essay Tutor Mark	-0.302*** (0.0771)				
Tariff points (total)	-0.00774 (0.0151)				
Tariff points (A2)	-0.0193 (0.0157)				
Maths A, B	-5.261+ (3.026)				
Maths C, D, E	-1.483 (1.922)				
Econ Alevel (Dummy)	-1.618 (1.751)	-1.443 (1.969)	-1.123 (1.960)	-3.144 (2.178)	
Gender	1.438 (2.146)	2.835 (2.386)	2.684 (2.357)	2.955 (2.431)	
Intercept	25.45*** (5.268)	9.324+ (4.926)	11.87* (4.669)	9.692** (3.345)	
Course dummy	Yes	Yes	Yes	Yes	
Observations	64	64	64	64	
R square	0.26	0.065	0.085	0.11	

Standard errors in parentheses

+ p<0.10, * p<0.05, ** p<0.01, *** p<0.001